



ArcticLite® Refrigerated Vans



ARCTICLITE

At Wabash National, we believe the purpose of innovation is to drive performance. By working with North America's leading refrigerated carriers, we've engineered the ArcticLite® refrigerated van to meet the rigorous demands of refrigerated operations. Thermally efficient, lightweight and extremely durable, this refrigerated van is designed to reduce operating costs and keep you on the road.

Superior Thermal Efficiency. Lower Operating Costs.

Every aspect of our design helps maximize thermal efficiency and lower your operating costs. From thermal breaks that prevent heat transfer, to our computer-controlled foaming process that ensures void-free sidewall insulation, the ArcticLite refrigerated van maintains your specified operating temperature with fewer reefer unit hours.

Less Damage. More Uptime.

This refrigerated van is designed to withstand your most abusive freight hauls. We've put more protection in the areas that need it most. In the interior, our standard high-

performance liners provide exceptional resistance to puncture and abrasion. The duct floor system, with a 16,000-lb dynamic load rating, supports heavier payloads and high-cycle loading and unloading.

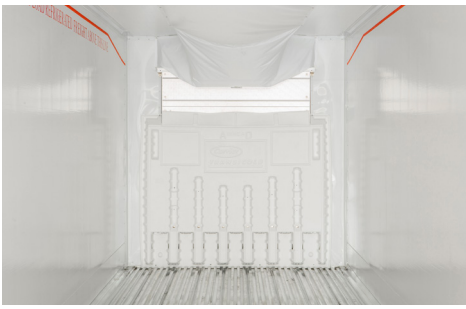
Less Weight. More Freight.

The ArcticLite refrigerated van delivers lightweight performance without sacrificing strength and durability. Built with high-strength, lightweight materials and components, this trailer increases available cargo capacity and provides freight flexibility in backhauls.

Longer Useful Life. High Resale Value.

No matter what your trade cycle, the ArcticLite refrigerated van delivers value year after year. Every aspect of this trailer is designed to extend its useful life. From the high-strength floor system and sidewalls to damage-resistant doors and LED light package, our trailers are built to last.





Arctic Lite Refrigerated Vans

BASE SPECIFICATIONS

General

- Insulation: 2" sidewall, 2" floor, 2" roof
- Dimensions: 53' x 102-3/8" x 13'6"
- Front interior height: 105-3/4"; Rear interior height: 106"
- Interior width sidewall to sidewall: 97-3/8"
- GVWR: 68,000 lb / 30,845 kg; GAWR: 20,000 lb / 9,072 kg
- Manufactured in an ISO 9001:2015 / ISO 14001:2015 registered facility

Nose/Coupler

- 4" coupler, stainless steel approach plate with full approach angle
- AAR-rated kingpin with zinc anodes for corrosion protection
- Extruded aluminum header
- Extruded aluminum, 5" radius front corner post
- Trailer refrigeration unit (TRU) frame with three vertical aluminum lower Z-posts, two vertical outboard steel posts and an aluminum upper/lower header

Sidewalls

- Pre-painted aluminum exterior side sheets
- Heavy-duty aluminum Z-posts on 24" centers, 12" centers in front and over landing gear
- Seamless thermoplastic and anti-microbial interior liner
- 12" integral-to-interior scuff liner, no exposed fasteners

Floor System

- 16,000-lb dynamic load rating (TTMA RP-37)
- Heavy-duty extruded aluminum duct floor
- Steel crossmembers in bay, 8" centers in rear 5'
- Fork lift reinforcement: 36" aluminum "I-inserts" in center 72" of floor at rear
- No-rot composite floor stringers installed with extra-wide HDPE stringers in the rear
- Single piece thermoplastic subpan

Roof System

- 1/8" aluminum doubler plate at front 6"
- Thermoplastic and anti-microbial interior liner

Rear Frame

- Brushed-finish stainless steel frame
- Heavy-duty stainless steel base plate in rear sill with post protection

- Rear impact guard with outboard vertical bumper legs meets or exceeds U.S. DOT and Transport Canada requirements
- Eyebrow and vertical light protection
- 3-1/2" rear header with integral gutter
- 3" insulated swing doors, 4 aluminum hinges per door, 1 lock rod per door
- Easy-open compression style door seal
- Vertical aluminum hat channel with cover plate for exterior hardware attachment

Suspension

- Hendrickson ULTRAA-K™ standard
- Parallel "P" spindle wheel ends
- Long-life brake linings
- White powder-coated lightweight steel wheels, low rolling resistant tires standard
- Intercostal crossmember bracing and landing gear
- Galvanized steel, one-piece landing gear support and galvanized K-brace

Lights/Electrical

- All LED lights
- Recessed header light
- Wabash National 3.0 sealed harness system

Options

- Corrugated sidewalls
- Door vents and nose vents
- Floor packages available in duct and grocer styles with smooth or anti-slip surfaces
- Floor systems available up to 18,000 lb
- Grocer, line haul and multi-temperature configurations
- Upper ID/AUX stop light system²
- Multiple aerodynamic options, including Wabash National DuraPlate AeroSkirt®¹
- Multiple axle configurations
- Multiple door packages available
- Numerous insulation packages
- SolarGuard® roof system
- Temperature control options/sensors
- Tire-pressure monitoring systems and tire-inflation systems
- Vertical and horizontal interior logistics
- Mechanical suspension
- RIG-16 bumper

FIND A DEALER wabashnational.com/location-search

Base specifications are accurate at the time of publication, and are subject to change without notice. Custom options are available; please consult your Wabash National representative for additional information. ©2019 Wabash National L.P. All rights reserved. DuraPlate AeroSkirt®, Arctic Lite®, SolarGuard®, Wabash® and Wabash National® are marks owned by Wabash National, LP.

¹U.S. Patent Nos. 8,177,286; 8,398,150; 8,579,359 ²U.S. Patent No. 8,653,957

WNT 0003 02.19



Commercial Trailer Products

Lafayette, IN
wabashnational.com
877-429-5180